

Three black electronic components are arranged on a blue background with a fine grid pattern. The top component is a rectangular module with a cable on the left and a connector on the right, featuring a small green LED and the 'Y&L' logo. The middle component is a circular connector with two pins. The bottom component is another rectangular module with a cable on the left and a connector on the right, also featuring the 'Y&L' logo.

WHAT WE DO.....

Company Profile

Y&L ELECTRONICS(HK) CO., LTD

www.ylelectronics.com.cn

All contents are Copyright Y&L ELECTRONICS CO.,LTD. All rights reserved

Developing Milestone

2009 Establish Y&L Electronics HongKong headquarter.

2012 Establish Y&L Electronics Shenzhen office.

2019 All models newly designed with latest EN62368 standard, product range extend to 100W max.

2019 Establish Dongguan factory with production area of 3500 M2; same year, factory ISO 9001 certified, also UL, CE, GS, UKCA, SAA, PSE, KC, CCC /CQC , BIS certified. All production will be located at Dongguan factory and Y&L Shenzhen will be global sales center.

YL Branches

A: Headquarter, Hong Kong

Flat 02, 7/F, SPA Centre, NO. 53-55, Lockhart Road,
Wanchai, Hongkong

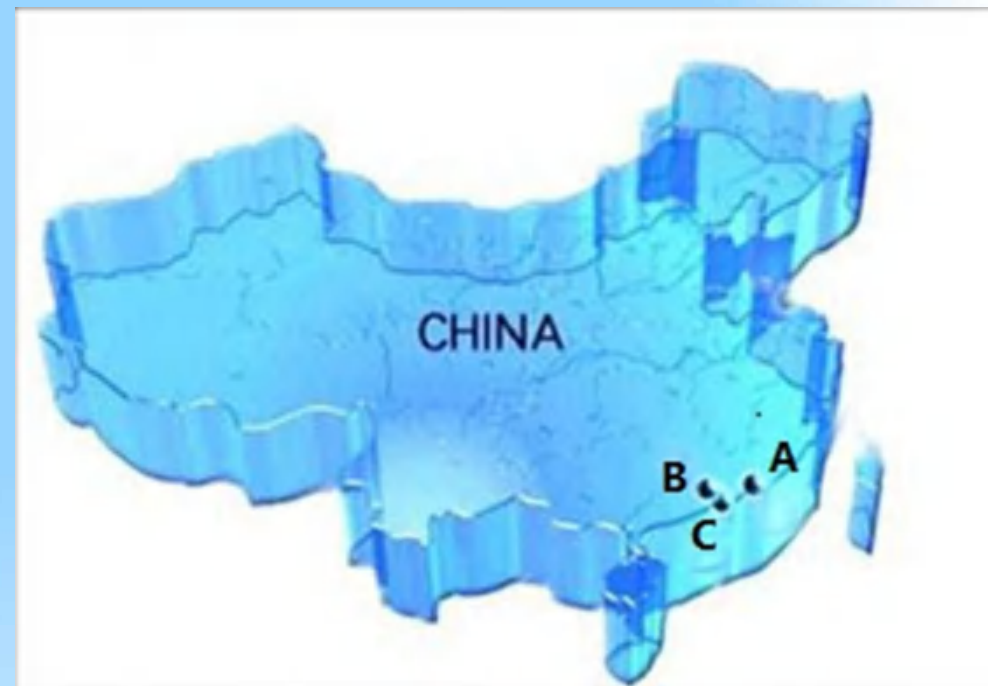
B:Shen Zhen Office, Guang Dong

D520 Hong Wan Mansion, No 703, Gushu 1st Road, Xixiang,
Baoan, Shenzhen, China 518126

- **Global Sales Department**

C: Dongguan Huangjiang Plant, Guangdong Province

RM501 Building 6, No 23, Jiabing Road, Huangjiang Town,
Dongguan City, Guangdong, P.R. China.



Dongguan Plant

Add: RM501 Building 6, No 23, Jiabing Road, Huangjiang Town, Dongguan City, Guangdong, P.R. China.

Factory Basic Info.:

Floor area: 2300M2

Total Employees: 100

-R&D: 6

-QA: 8

-Engineering: 6

-Others: 20

-Production: 60

Capability:

-Production line: 3

-Full capacity: 30K/DAY

-Production of linear and switching
adapters

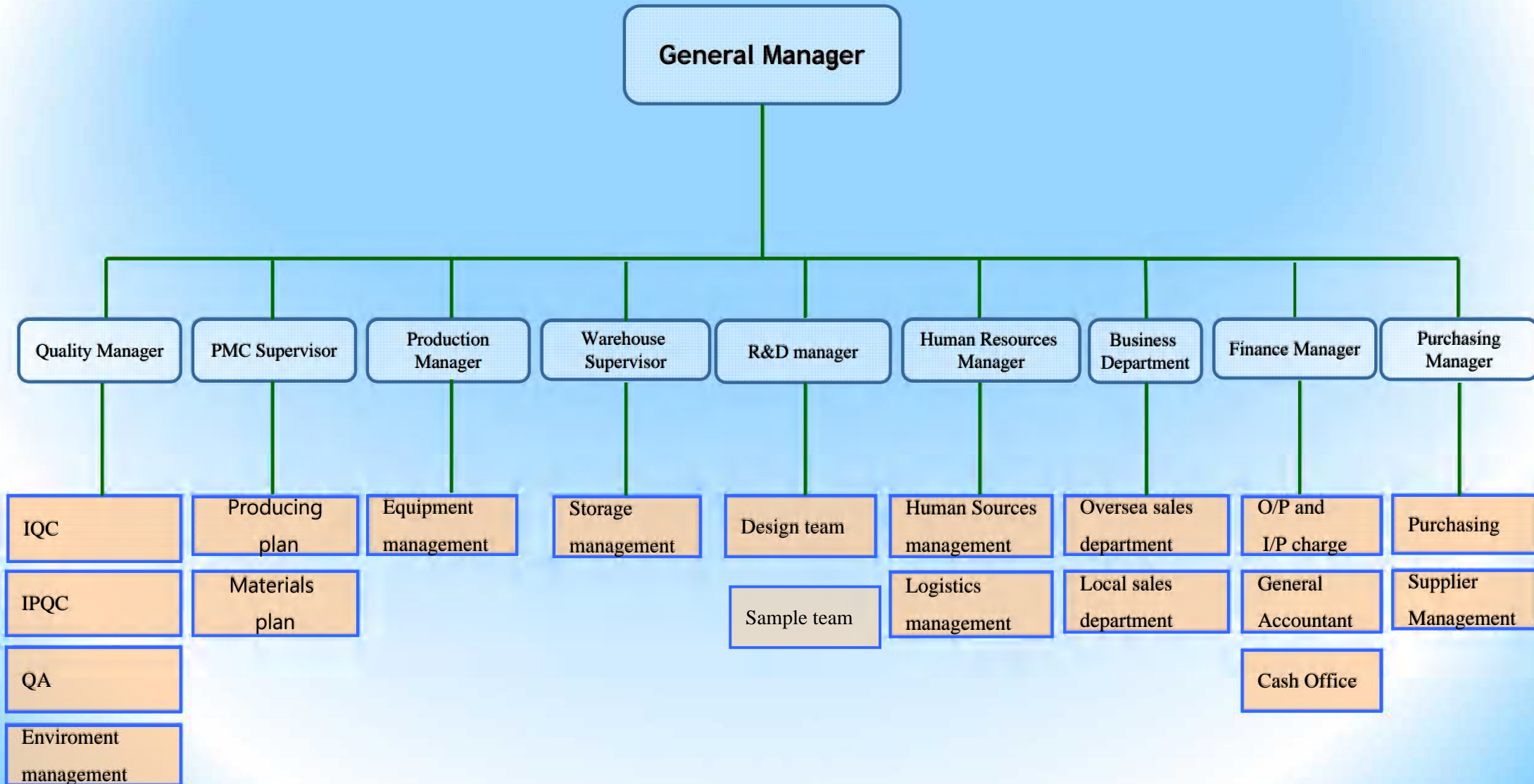
-Material logistics

-R&D

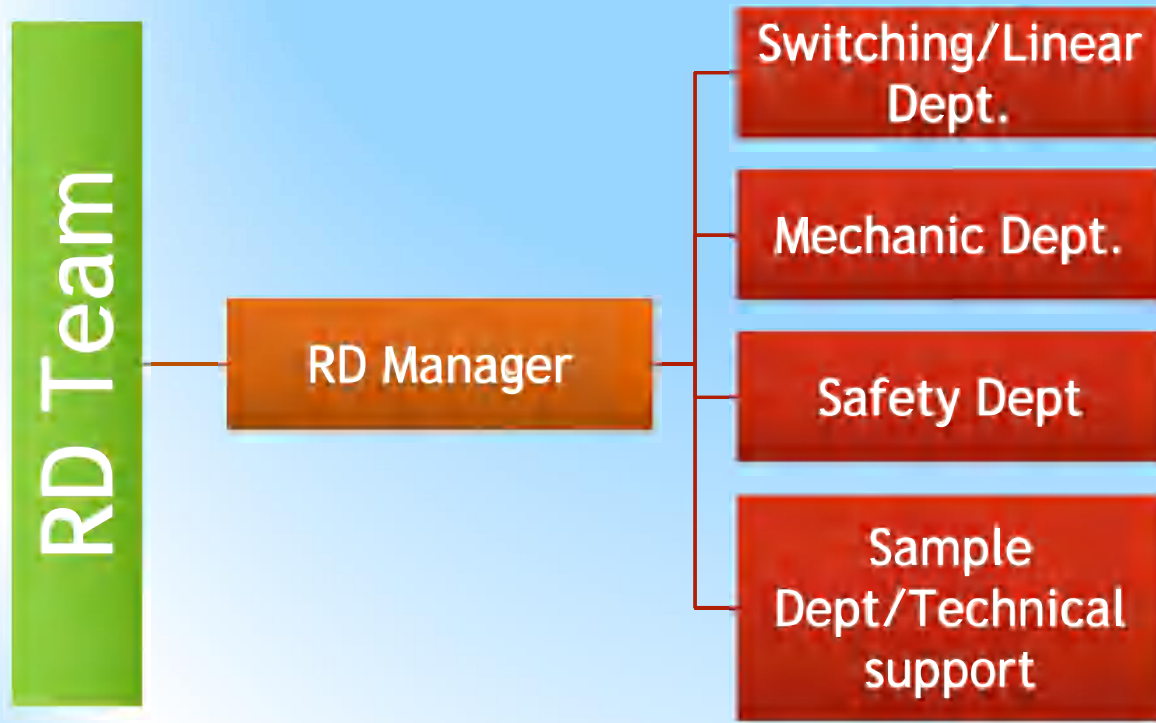
-Quality control

-Customer service

* Organization chart



* R&D team

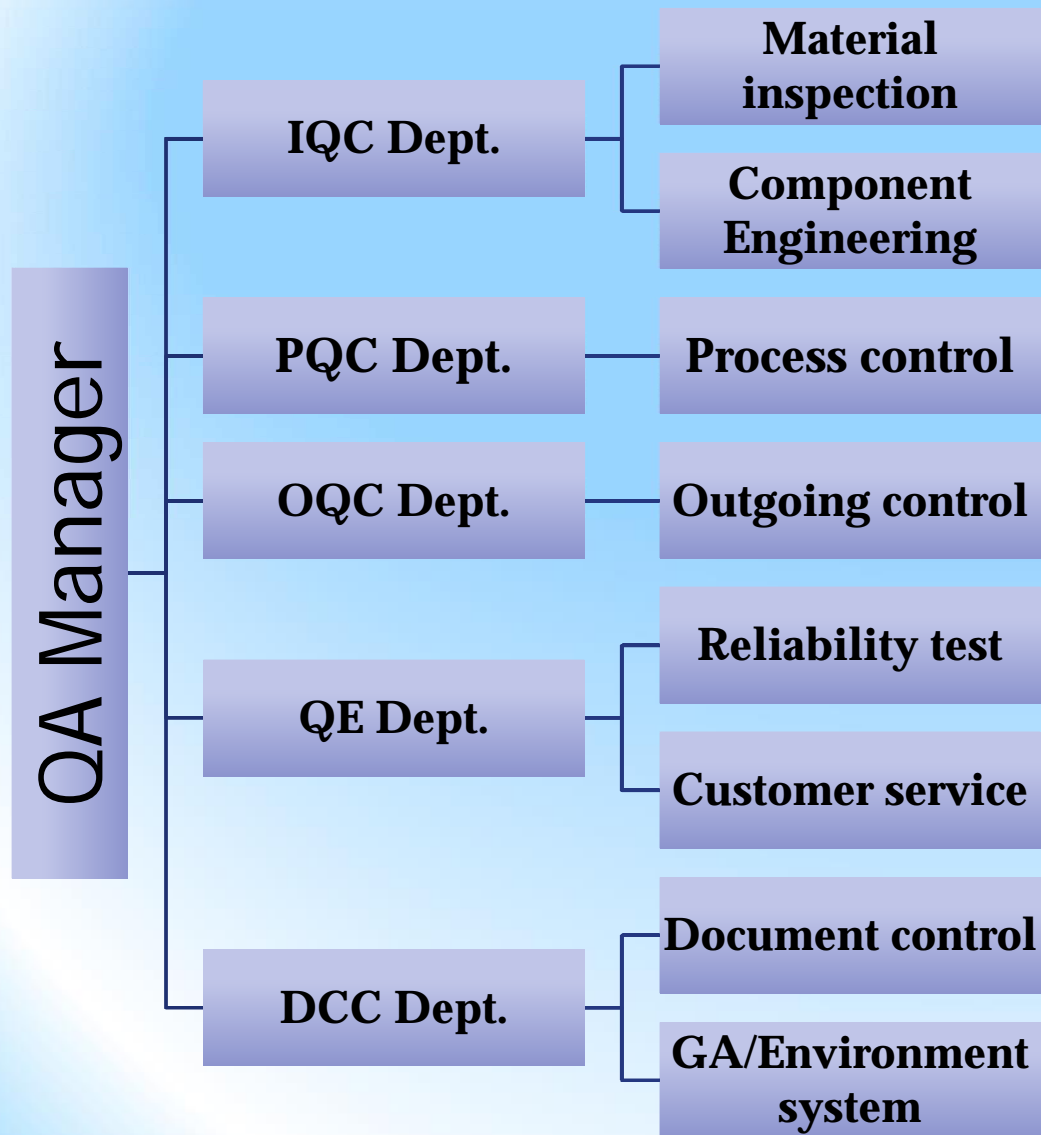


R&D strategy:

Stays abreast of the latest trends in applied markets, increases product function and develops new products to meet market needs.

Y&L places great emphasis on interaction with customers, with its decades of market experience and knowledge of market needs, Y&L is ahead of schedule in developing a comprehensive line of products.

QA team



Quality policy:
Meet all customer's demand.

* Production process



Auto insertion



Surface mounting



DIP



Wave soldering



Assembly



Pretest then Sonic bonding



Burn in



Final test



Packing



FQC then to warehouse



OQC

Ship to Customer
by Truck
by air
by sea

* Frontage and workshop



* Burn in and Auto monitor system



* Reliability and Function test equipment

- **Thermal Shock Chamber:**



- **Plug on/off tester:**



- **Temp. & Humi. Chamber:**



- **Bend tester:**



* Reliability and Function test equipment

- **ORT (Ongoing reliability test)**



- **ATE tester:**



- **Temperature Recorder:**



- **Salt Spray test:**



➤ Main Products

➤ Linear adapters(AC to AC/ AC to DC)



➤ Wall type switching adapters (12W/24W/30W/36W/48W)



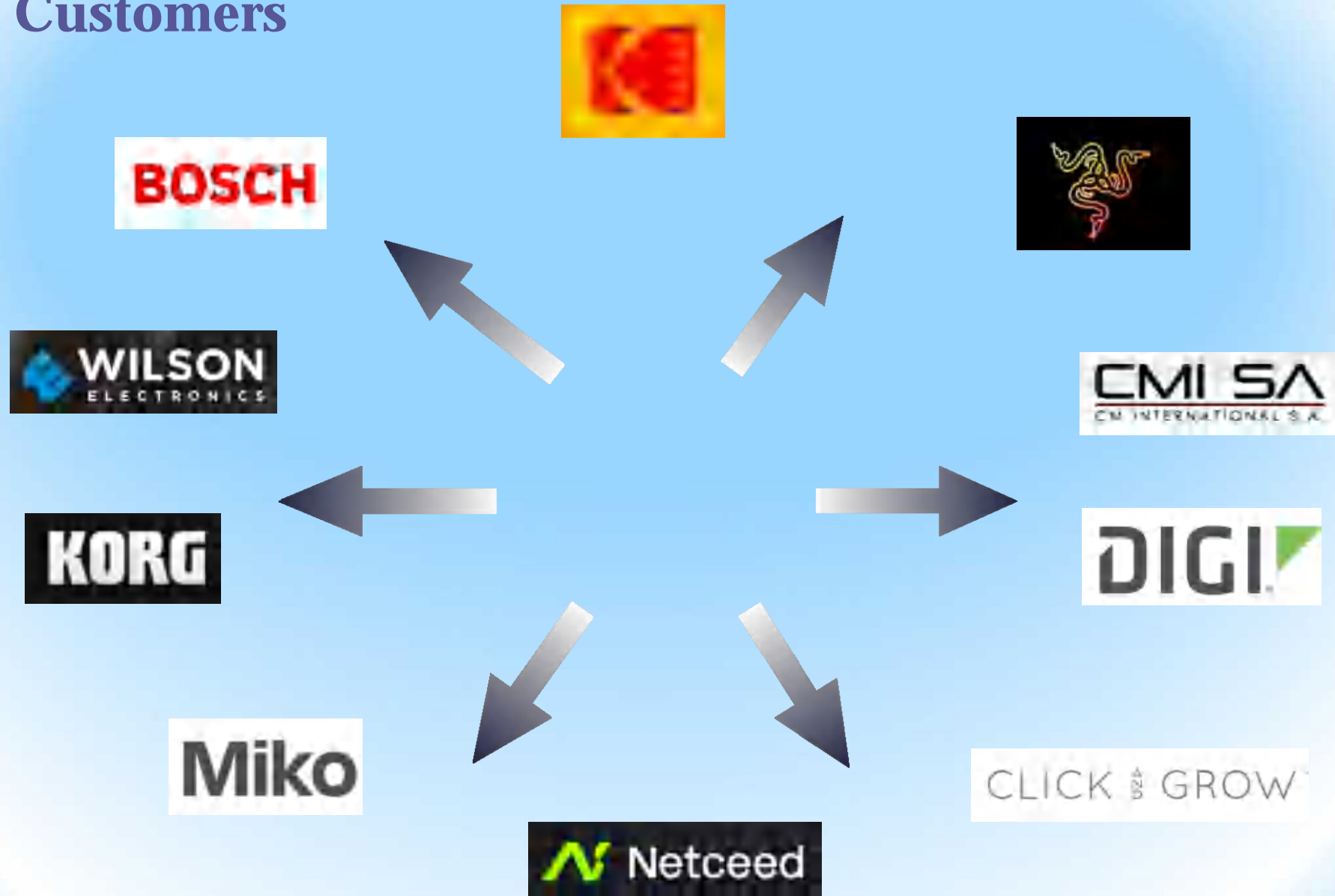
➤ **Interchangeable (12W/24W/30W/36W/48W)**



➤ **Desk type adapters (24W/30W/36W/48W/65W/100W)**



Main Customers



* Main Certifications



United States/Canada UL Certification



Germany(Europe)GS Authentication security



China compulsory certification ; CCC mark



CE security certificate



Australia C-Tick Certification



Japan PSE Certification



Korea EK-MARK certificate



SGS Societe Generale De Surveillance



United States FCC electromagnetic compatibility certificate

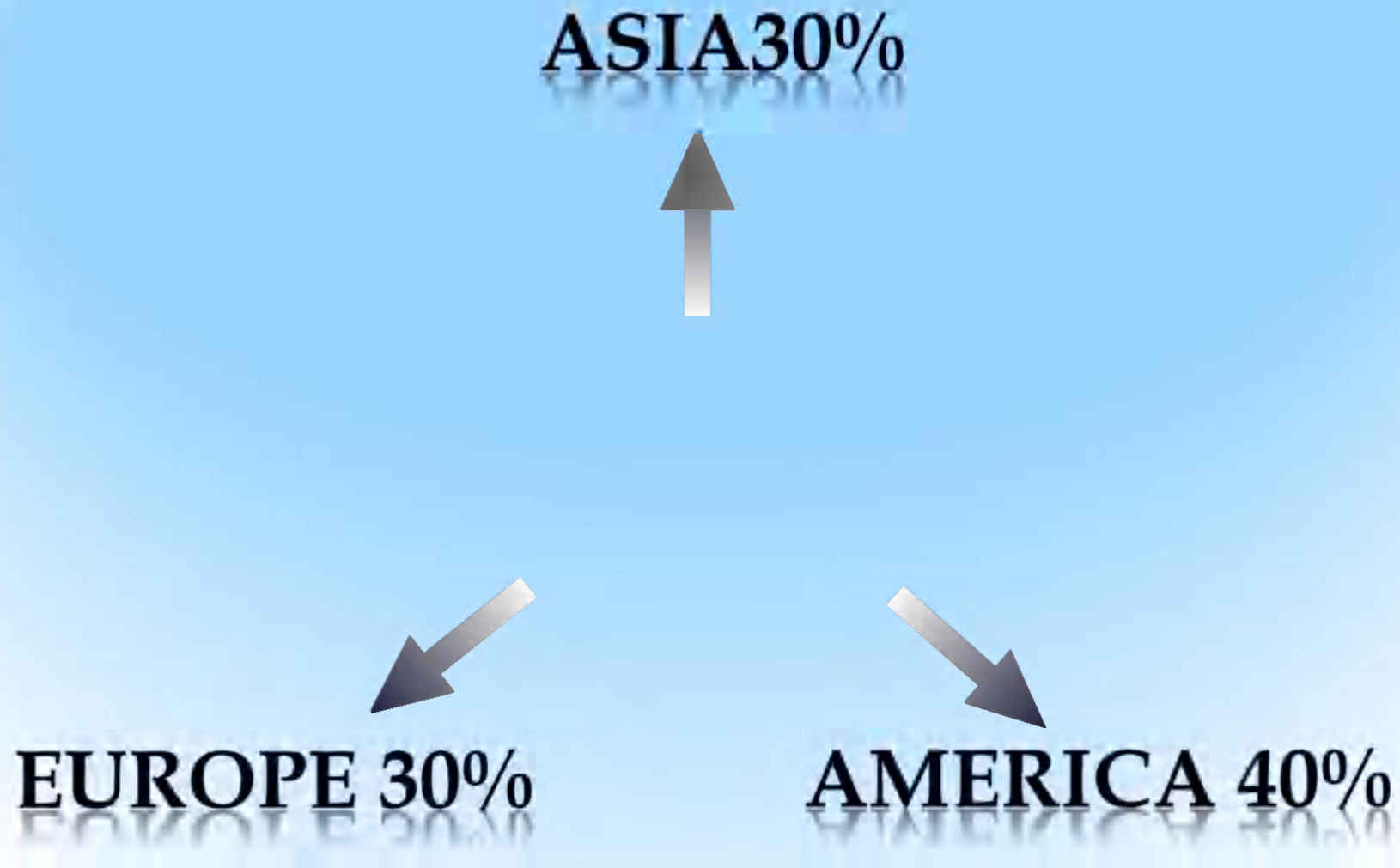


International electrician CB the authentication system



CQC china quality certification center

Market Share - 2023



* Culture



* Quality

* Service



**Do Our Best
Enhancing Our Capability
To Fit Your Needs
Thank You!**